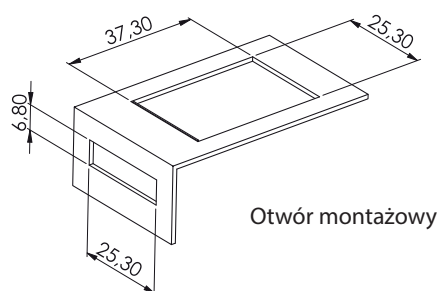


Typ zamka    Wersja

230

V1



Zatrask

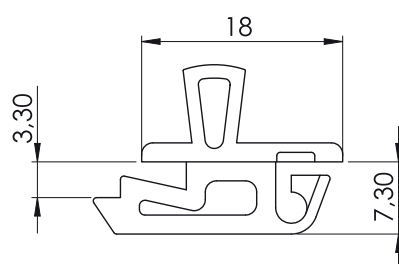
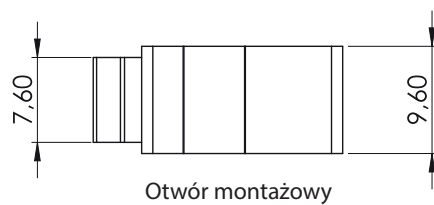
230



V1

Materiał

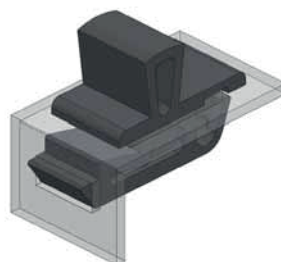
Korpus : Poliamid  
Grubość blachy : 1,20 - 1,50 mm



Typ zamka    Wersja

230

V2



Zatrask

230



V2

Materiał

Korpus : Poliamid  
Grubość blachy : 1,20 - 1,50 mm