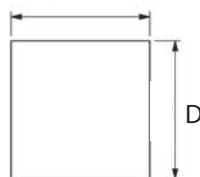
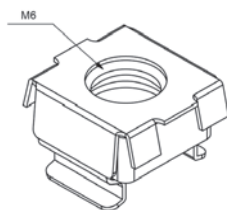


708

Nakrętka klatka



MONTAJ ÖLÇÜSÜ
FIXING

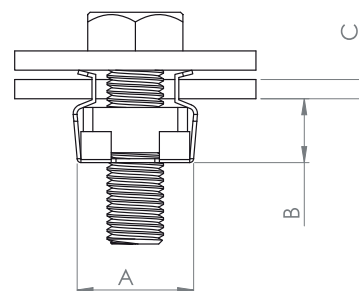
Otwór montażowy

Kod

Wersja

708

V



Materiał

Korpus : Stal

| Śruba | Wersja | Nakrętka | A | B | C | D |
|-------|--------|--------------|------|-----|----------|----|
| M5 | 1 | 11x11x4,5 mm | 12,6 | 6 | 1,7~ 2,5 | 9 |
| M6 | 2 | 11x11x4,5 mm | 12,6 | 6 | 1,7~ 2,5 | 9 |
| M8 | 3 | 11x11x5,5 mm | 16 | 7,8 | 3,3~ 4,1 | 12 |

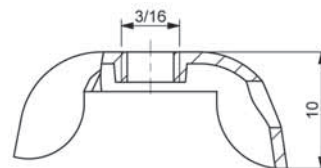
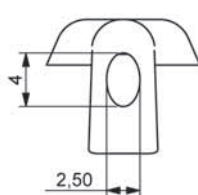
716

Nakrętka motylek



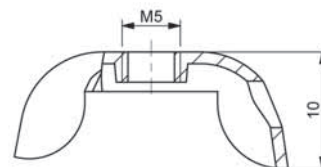
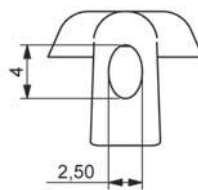
Wersja

V1



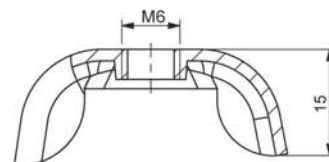
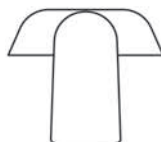
Wersja

V2



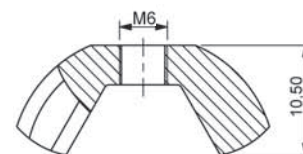
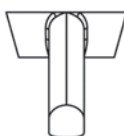
Wersja

V3



Wersja

V4



Kod

Wersja

716

V